

# **GRAVITY AND ANTI-GRAVITY EXPLAINED**

THIS IS A HOOT OR EVEN A HOWL – TOTALLY LAUGHABLE:

FIRSTLY, PHYSICS HAS NO IDEA WHAT GRAVITY IS – LET ALONE ANTI-GRAVITY.

TO WHIT, I OFFER THE FOLLOWING QUOTE ATTRIBUTED TO EINSTEIN – ALL OF THE FOLLOWING QUOTES COME FROM AN ARTICLE IN NEXUS MAGAZINE, VOL. 10, No 6, DATED: OCT.-NOV. 2003, TITLED: ANTIGRAVITY – HOLY GRAIL OF THE 21<sup>st</sup> CENTURY, BY BRUCE SMITH.

EINSTEIN SUPPOSEDLY SAID WHEN QUERIED ABOUT HIS EXPERTISE ON GRAVITY: “No. I am not a magician, yet. I am still learning.”

SO, YOU CAN SEE WHY THIS IS A HOWL – THE MOST FAMOUS SCIENTIST ON THE PLANET HAS NO IDEA WHAT GRAVITY IS AND WE ARE GOING TO EXPLAIN NOT ONLY GRAVITY BUT ANTI-GRAVITY, ALSO. SNICKER. THEREFORE – I RECKON WE NEED TO KNOW HOW GRAVITY IS GENERATED – WHERE DOES IT COME FROM AND WHAT CAUSES IT. I MEAN – IF ONE CAN NOT EXPLAIN GRAVITY – THEN IT IS A FAR STRETCH TO OFFER AN EXPLANATION OF ANTI-GRAVITY.

## **FIRSTLY THE RULES OF THIS GAME:**

LADIES AND GENTLEMEN – GRAVITY IS ONE OF THOSE FOUNDATIONAL FORCES THAT EXISTED BEFORE TIME, FREQUENCY AND LANGUAGE. SO, NEITHER TIME NOR FREQUENCY CAN BE ALLOWED IN THIS EXPLANATION WHICH THUS EXCLUDES NUMBERS. AND BECAUSE LANGUAGE IS ALSO A NEW ARRIVAL – WE HAVE TO USE THE VERY SIMPLEST OF IDEAS – BECAUSE THERE WERE PRECIOUS FEW IDEAS OF ANY KIND WHEN GRAVITY CAME TO BE.

AGREED?

SO, THE SIMPLE EXPLANATION IS THAT GRAVITY IS CAUSED BY THE RULE, “LIKE ATTRACTS LIKE”, WHICH IS NOT TOO DIFFICULT.

I AM GENERALLY ACCOSTED ABOUT A SUPPOSED LAW THAT OPPOSITES ATTRACT I.E. THE NORTH AND SOUTH POLE OF MAGNETS ARE THE TIME WORN EXAMPLE. BUT, THAT ATTRACTION IS ALSO “LIKE ATTRACTS LIKE” – THE REASON: SIMPLE – AS USUAL – WHY DO THE NORTH AND SOUTH POLES OF MAGNETS STICK TOGETHER? **BECAUSE THEIR ENERGY FIELDS MATCH UP!!!!** THUS, WE HAVE “LIKE ATTRACTS LIKE”. BORING.

NEWTON'S EQUATIONS FOR DETERMINING THE AFFINITY ONE MASSY BODY HAS FOR ANOTHER MASSY BODY WORK VERY WELL HERE ON EARTH. HOWEVER, IN THE COSMOS – THERE IS AT LEAST 10 TIMES MORE GRAVITY THAN THERE IS MATTER TO ACCOUNT FOR IT – ACCORDING TO NEWTON'S EQUATION, WHICH OBVIOUSLY DOES NOT WORK IN SPACE. PLUS THAT EQUATION EXCEEDS THE PARAMETER OF BEING A SIMPLE IDEA – ONLY SIMPLE IDEAS ARE ALLOWED HERE. SO, ALL OF THE SCIENTIFIC IDEAS ABOUT GRAVITY WITH THEIR EQUATIONS ETC. ARE BULL SHIT – GRANTED THEY TAKE THEM SERIOUSLY – BUT, QUITE SIMPLY GRAVITY EXISTED BEFORE NUMBERS AND ALL OF THEIR COMPLICATED IDEAS. THEREFORE, ALL OF THOSE IDEAS ARE SIMPLY TOO COMPLICATED, NEW FANGLED AND WORTHLESS.

BUT, OF COURSE, HUMANS LIKE COMPLICATIONS BECAUSE THEY CAN THEN PROFESS TO UNDERSTAND THEM AND THUS FEEL LIKE THEY OWN SOMETHING – WHEN, IN FACT, ALL THINGS BELONG TO GOD AND ALL THINGS GO BACK TO GOD – INCLUDING THESE RIDICULOUS IDEAS ALONG WITH YOUR BODY aka YOUR SORRY ASS – NOT KNOWING THAT YOU ARE GOD – A SERIOUSLY SORRY STATE

SO, THE “LIKE ATTRACTS LIKE” RULE MAKES THINGS MUCH EASIER I.E. ALL THINGS HAVE AN AFFINITY FOR ONE ANOTHER – VERY SIMPLE = GRAVITY AND ANTI-GRAVITY – BOTH ARE BORN OF THE RULE.

NOW – WHY?

THE ANSWER IS MIRRORING – AN OBVIOUS EXTENSION OF THE RULE, “LIKE ATTRACTS LIKE” – EXCEPT THAT THE MIRROR IMAGE IS REVERSED WHEN LOOKING AT THE TWO IMAGES FROM THE OUTSIDE – BUT, IF THE TWO IMAGES ARE LOOKING AT ONE ANOTHER THEY SEE AN EXACT COPY – A FRIENDLY FACE FOR WHICH THERE IS AN ATTRACTION.

TRUTHFULLY AT THIS POINT IN CREATION THERE ARE NO POINTS OF VIEW EITHER – SO THINGS ARE NOT REALLY LOOKING OR SEEING ANYTHING ELSE – IT IS AN EXPERIENCE. LIKE INSTINCT OR INTUITION – THESE ARE THE ABORIGINAL FORMS OF CONSCIOUSNESS THAT ARE SHOWN TO US EVERY DAY BY THE AMAZING WAY FLOCKS OF BIRDS FLY IN SYNCHRONICITY – DITTO SCHOOLS OF FISH.

AND THE RULE ITSELF COMES FROM SPACE TRYING TO IDENTIFY HERSELF IN THE FOLLOWING MANNER: CONSCIOUSNESS SAYS, “I AM.” THE NEXT OBVIOUS QUESTION IS, “WHAT AM I?” WELL, SINCE THERE WAS NOTHING ELSE THERE – THAT ANSWER IS: “I AM THAT I AM” OR I AM = I AM. THUS, THE RULE “LIKE ATTRACTS LIKE” AND “I AM THAT I AM,” ARE EXACTLY THE SAME I.E. THE TWO IMAGES LOOKING AT ONE ANOTHER – SEEING EXACTLY THE SAME THING. SINCE THERE WAS ONLY GOD – THEN GOD HAD TO EXPERIENCE HERSELF.

SO, EVERYTHING HAS AN AFFINITY FOR EVERYTHING ELSE. THIS FACT, AS YOU WILL SEE, EXPLAINS BOTH GRAVITY AND ANTI-GRAVITY WITH ANTI-GRAVITY ACTUALLY BEING THERE FIRST. SNICKER. HA, HA!!!

**THE AETHER:**

IF YOU REPEAT – “I AM THAT I AM” – YOU HAVE A CIRCLE. SINCE THERE ARE NO OTHER IDEAS AVAILABLE, THEN YOU ARE GOING TO HAVE A VERY LARGE NUMBER OF CIRCLES – ALL CONNECTED TOGETHER AND LOOKING LIKE A GIANT HONEYCOMB = THE AETHER.

IN FACT, I'D BET THAT, “I AM THAT I AM” IS STILL GOING ON. THUS, THE UNIVERSE IS EXPANDING – DUH. AND ALL THINGS WANT TO GO TO GOD. SO, THE UNIVERSE IS FOLLOWING GOD OUTWARD INTO SPACE / GOD.

The Lord created everything in the universe, but kept nothing for Himself. Every creature has been given complete freedom to enjoy anything it desires. But there is one limitation. For every action there is a corresponding reaction. You are free to act as you please, subject to this rule. If you misuse the freedom given to you and indulge in wrongful deeds, the consequences too are bound to be bad. These results are not caused by God. The Lord does not inflict harm on anyone. Everything that happens is the consequence of one's own thoughts and actions. Sai Baba

THERE ARE SO MANY OBSERVATIONS THAT SHOW THE AETHER – I MEAN PICTURES THAT ARE ALL FULLY ACCEPTED – BUT, MAIN STREAM SCIENCE AS YET DOES NOT REALLY ACCEPT THE AETHER DESPITE THE EMPIRICAL FACTS. SO, I'LL LIST A FEW: WIMPS (WEAK INTERACTIVE MASSIVE PARTICLES IN SPACE – DIVIDE SPACE INTO A GIANT HONEYCOMB); THE BANDS OF LIGHTENING THAT RUN ACROSS THE FACE OF THE EARTH; AN EXPERIMENT WHERE DNA ORGANIZES LIGHT INTO BANDS – VERY MUCH LIKE THE LIGHTENING BANDS; HONEY COMES FROM HONEYCOMBS AND IS THE ONLY FOOD THAT DOES NOT SPOIL!!; THE EXPERIMENT: “1776 EVAPORATIONS OF IRIIDIUM ONTO A SUPER COOLED TUNGSTEN PLATE” THERE AGAIN THE IRIIDIUM WAS NATURALLY DEPOSITED IN BANDS; SCALAR WAVES ARE REAL AND INFINITE – BECAUSE THEY ARE PROPAGATED IN HARMONY WITH THE AETHER; MATTER MOVES IN A JITTERBUG MOTION – LITERALLY SKIPPING FROM ONE BAND TO THE OTHER ETC. – PLEASE.

MOSES – THE FIRST STONE TABLET THAT HE USED TO SMOTE OPEN THE GROUND – SUPPOSEDLY WRITTEN ON IT WAS, “I AM THAT I AM.” FANCY THAT. ESPECIALLY SINCE SAI BABA JUST TOLD US THE SAME THING.

THERE WAS A DOCUMENTARY ABOUT THE COUNTRY OF ECUADOR. SOME SPANISH EXPLORER BUILT A MONUMENT ON THE EQUATOR – USING THE BEST SCIENTIFIC METHODS AVAILABLE TO HIM AT THE TIME. THEN THEY FOUND OUT THAT HE'D MISSED IT BY 50 FEET – A FACT THE NATIVE PEOPLES HAD KNOWN AT LEAST 1000 YEARS PREVIOUSLY. NOW HOW DID THEY KNOW THAT? SIMPLE VIA OBSERVATIONS SO, WHY CAN'T OUR SCIENTISTS OBSERVE THE FACTS SUPPORTING THE AETHER AND AGREE ON IT? I GUESS THEN THEY'D HAVE NOTHING TO ARGUE ABOUT. DITTO CANCER – IF THEY ALLOW THE CURES TO BE USED, THEN A LOT OF PEOPLE WILL BE OUT OF WORK.

SO, ANYWAY THERE IS AN AETHER – ABSOLUTELY, POSITIVELY, WITHOUT ANY DOUBT.

NOW IMAGINE THAT YOU ARE IN A BOB SLED ROCKETING ALONG ON ONE OF THESE BANDS OF THE AETHER = ANTI-GRAVITY – STOPPING IS A MAJOR PROJECT FOR TWO REASONS: HOW? AND WHY?

BACK TO OUR SIMPLE REASONS HERE I.E. IF YOU GOT YOURSELF GOING ALONG ONE OF THOSE BANDS, WHICH MEANS THAT YOU GET TO EXPERIENCE EVERYTHING THAT EXISTS WITHIN THAT BAND – WHY STOP? SINCE THERE ARE NO OTHER IDEAS OUT THERE – THEN EXPERIENCING AS MUCH AS POSSIBLE IS A BONUS. SO, ANTI-GRAVITY CAME FIRST.

THE MOST OBVIOUS ANTI-GRAVITY EXAMPLES ARE SUPER CONDUCTORS – ALL OF WHICH LEVITATE – WHEN THEY ARE FLOWING SUFFICIENT ENERGY. BUT, THEY DON'T TAKE OFF INTO SPACE – THEY ACHIEVE A STATION IN SPACE – ACTUALLY THEY WILL SLIP ALONG IN ONE PLANE – GOING NEITHER UP NOR DOWN – SLIPPING ALONG IN ONE PLANE OF THE AETHER. THUS, THE SUPER CONDUCTOR IS IN HARMONY WITH THE

AETHER. THIS IS THE MOST IMPORTANT ASPECT OF ANTI-GRAVITY I.E. HARMONY WITH THE AETHER – aka: LIKE ATTRACTS LIKE.

THESE PLANES OR BANDS MAKE THE TWO DIMENSIONAL NATURE OF THE AETHER VERY OBVIOUS. SO, SINCE 2-D PREDATES 3-D. THEN AGAIN, WITHOUT ANY DOUBT: ANTI-GRAVITY CAME FIRST.

“Podkletnov, the Russian researcher working in Finland, ... claims that the “if the superconductors were rotated considerably faster than 5000 rpm ... perhaps five to 10 times as fast, the disk experiences so much weight loss that it actually takes off”. Or 25,000-50,000 revolutions per minute within some kind of torsion field creates levitation.” Ala: NEXUS & BRUCE SMITH’S ARTICLE – ANTI-GRAVITY.

NOW THE WAY THAT YOU GET FROM ONE PLANE IN THE AETHER TO ANOTHER IS VIA SPIN. WHERE DOES THE SPIN COME FROM – EDDY CURRENTS – MIRROR IMAGES – WE’LL SEE THIS LATER. SO, IF THE SUPER CONDUCTOR OR ANYTHING THAT SPINS WITH THE RIGHT KIND OF ENERGY ON BOARD, THESE THINGS WILL TAKE OFF AND SKIP FROM ONE BAND IN THE AETHER TO ANOTHER OFF INTO INFINITY.

SO, WE’LL TOUCH FURTHER ON ANTI-GRAVITY LATER – NOW THE BIG ONE:

### **GRAVITY:**

THIS IS A 2-D ENERGY MANIFESTING ITSELF IN 3-D. THE REASON FOR THAT IS BECAUSE YOU CAN NOT REALLY MEASURE GRAVITY DIRECTLY AS A VIBRATORY ENERGY FORM. HOWEVER, IT SEEMS TO BE MANIFEST EVERY WHERE EXCEPT WHERE WE HAVE ANTI-GRAVITY FIELDS. CONFUSING THE SAY THE LEAST – NO WONDER EINSTEIN LOOKED AT IT AS MAGIC.

FURTHER STRANGENESS: THE MOON CAUSES OUR TIDES DUE TO ITS GRAVITATIONAL PULL ON THE EARTH. THE MOON GOES AROUND THE PLANET ABOUT ONCE A DAY – BUT WE HAVE TWO TIDES PER DAY – WHY? SCIENCE HAS NOT ANSWERED THAT ONE – UNTIL NOW – THE MOON HAS AN ELECTROMAGNETIC MIRROR IMAGE – IMAGINE THAT!!! WHY? BECAUSE OF THE RULE

SO, GRAVITY DOES NOT OBEY NEWTON’S LAWS; YET, IT SEEMS TO BE THE ONE FORCE THAT CAN BE FOUND NEARLY EVERY WHERE; IT IS NOT A CONSTANT FORCE; AND IT DOES STRANGE THINGS – ACCORDING TO OUR NORMAL WAY OF THINKING; FINALLY, THERE ARE DEVICES AND ANOMALIES THAT SEEM TO DEFY GRAVITY.

SO WHAT IS IT?

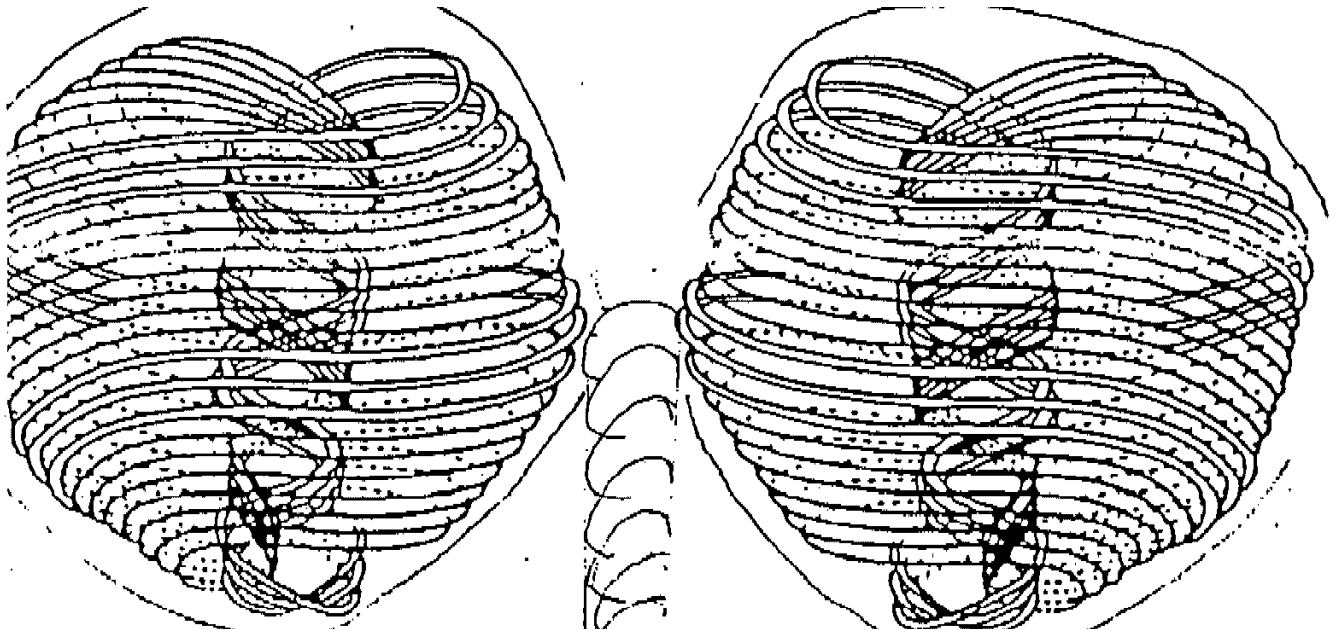
AS STATED PREVIOUSLY – GRAVITY IS A RESULT OF THE RULE, LIKE ATTRACTS LIKE. AND, MIRRORING – IT IS IMPORTANT TO NOTE THAT A MIRROR ONLY WORKS IF THERE IS A GAP THROUGH WHICH THE REFLECTION MUST PASS. NO GAP – NO MIRROR IMAGE.

THE EXACT WAY THAT GRAVITY IS MANIFEST IS AS FOLLOWS – I’M GOING TO SKIP SOME OF THE INTERMEDIARY STEPS AND GO DIRECTLY TO THE HOME OF GRAVITY – THE PLACE WITHIN THE AETHER WHERE YOU FIND GRAVITY. THAT PLACE IS WITHIN THE GAPS OF THE AETHER – BETWEEN THE ANUs – THE TINY BLACK HOLES THAT ARE EVERY WHERE.

THE AETHER HAS BANDS TO IT – THE BANDS THAT NORMALLY DRAW OUR INTEREST HAVE THINGS THEREIN – LIKE THE LIGHTENING. HOWEVER, THE BANDS WHERE THERE IS NOTHING – IN THE GAPS – THERE YOU HAVE EVERYTHING INCLUDING GRAVITY.

THIS PICTURE OF THE TWO ANUs IS NOT QUITE RIGHT – THERE IS AN EMPTY / GAP CELL BETWEEN THE TWO THAT IS THE SAME SIZE AS THE AETHERIC CELLS AROUND THE ANUs. OK – PICTURE THAT PLEASE.

THE ANU – ONE BEING A MIRROR IMAGE OF THE OTHER – AS A RESULT OF THE RULE



AS WE HAVE COVERED AD NASEUM – THE ANU IS THE ABORIGINAL ENERGY FORM – IT IS THE FIRST NAME OF GOD IN THE ANCIENT TEXTS. THE ANU IS A FACT OF LIFE – BECAUSE YOU CAN TAKE PICTURES OF IT. HOWEVER, THE ANU EVEN THOU IT APPEARS TO BE 3-D TO US – IT LIVES IN A 2-D WORLD – THE AETHER – THUS, IT SEES ITSELF AS BEING 2-D

**IN THE GAP**

AGAIN – PLEASE PICTURE ANOTHER EMPTY CELL BETWEEN THE TWO ANUs. THIS EMPTY CELL IS ALL IMPORTANT. BECAUSE THIS IS WHAT WE ARE TALKING ABOUT – WITHIN THIS EMPTY CELL WE FIND GOD AND GRAVITY. AGAIN, PEOPLE, THIS IS AN EXTREMELY FUNDAMENTAL IDEA – DEADLY SIMPLE AND I’M AFRAID TOTALLY LOGICAL – THANK YOU KINDLY, DR. SPOCK.

WHAT ELSE IS IN THIS GAP?

1. GOD’S DREAM – WHEN MATTER CROSSES ONE OF THESE GAPS, WHICH IS PRETTY OFTEN, GOD’S DREAM IS IMPOSED ON CREATION. “AS ABOVE, SO BELOW” OR, MORE PRECISELY: “AS WITHIN, SO WITHOUT.”
2. IN THE GAPS THE ELECTRIC AND MAGNETIC COMPONENTS ARE PARALLEL TO EACH OTHER AND SEPARATED – IN THE SEPARATION BETWEEN THESE COMPONENTS LAY ALL POTENTIALS AND OUR OLD BUDDY, GRAVITY.
3. SPIN – THE GAPS ARE SURROUNDED BY SPIN. PHYSICS HAS DESCRIBED THIS SPIN AS A NEILSON-OLSEN VORTEX.
4. SUPER CONDUCTANCE – BASICALLY A BLACK HOLE WHICH IN PHYSICS IS KNOWN AS A HIGGS SUPER CONDUCTING VACUUM. > REALLY AND ULTIMATELY ALL THINGS GO TO GOD – THERE IS AN AFFINITY FOR HER.
5. THIS IS THE ZERO POINT THAT PHYSICS KEEPS TRYING TO FIND – THE THING IS THAT IT IS NOT A POINT – IT IS A GAP / SPACE IN THE AETHER THAT CONTAINS INFINITE POTENTIAL, WHICH IS WHY THEY WANT TO FIND IT. MEANWHILE IT IS RIGHT IN FRONT OF THEM – RIGHT IN THEM – ACTUALLY THE MOST ESSENTIAL PART OF ALL THINGS IS THIS GAP. GOD IS ALWAYS WITH YOU AND CAN NOT FORE SAKE YOU – IT MAKES NO DIFFERENCE WHO YOU ARE. EXCEPT FOR ARROGANT IDIOT SCIENTISTS – THEY INSIST ON DENYING THE OBVIOUS.

SO THE GAP IS A BUSY PLACE – SMALL WONDER REALLY – ALL THINGS RESIDE THERE. WITHIN THE ENTIRETY OF SPACE WHAT DO YOU HAVE? TWO ANSWERS: NOTHING AND EVERYTHING. WHAT DO YOU HAVE IN ANY TINY PIECE OF SPACE? THE SAME TWO ANSWERS. HOWEVER, DESPITE CONTAINING EVERYTHING, THE GAP IS QUITE A PEACEFUL AND A RATHER AUTOMATIC PLACE, AS YOU WILL SEE.

THE GAP: SHE IS FEMALE. QUITE SIMPLY – ALL THINGS ARE CREATED IN THE DARK – IDEAS, ALL SEEDS GERMINATE IN THE DARK, ALL THINGS ARE NURTURED IN THE DARK (ALL EMBRYOS DEVELOP IN THE DARK; THE BODY REBUILDS ITSELF AT NIGHT). INDIAN GURUs WHEN THEY REACH ABOUT 80 IF THEY WANT TO KEEP LIVING, THEY GO DOWN INTO A HOLE

IN THE GROUND (MOTHER EARTH) WITH NOTHING FOR 80 DAYS AND COME OUT WITH A NEW BODY – EVEN NEW TEETH. ALL THINGS ARE NURTURED BY THE DARK, WHICH IS FEMALE IN GENDER.

SO, GRAVITY AND GOD HERSELF IS IN THE GAPS.

NOW SOME BACK UP FOR THAT:

THE AETHER AND THE GAPS ARE THERE – PICTURES DON'T LIE. SOMETIMES THE FOLKS INTERPRETING THE PICTURES ARE LESS THAN TRUTHFUL.

THE ANU IS THERE – AGAIN – PICTURES – NO MYSTERY – ANY SCIENTIFIC EXPLANATION THAT DOES NOT INCLUDE THE ANU IS IN ERROR. AND ALL THESE ANUs ARE NOT JUST FLOATING AROUND IN SPACE WILLY NILLY – THERE IS A STRUCTURE, WHICH MANIFESTS ITSELF INTO 3-D AS FRACTALS.

SUPER CONDUCTANCE IS REAL – HOWEVER, CERTAIN OF THE SUPER CONDUCTING PHENOMENA ARE OVER LOOKED LIKE NORMAL TEMPERATURE SUPER CONDUCTORS WHICH ELIMINATE ALL THE LAWS OF PHYSICS; SO, ALL THE NEW FANGLED IDEAS ARE USELESS – WORSE THAN USELESS – ACTUALLY MISINFORMATION TAKING MANKIND IN THE WRONG DIRECTION.

WIMPS ARE THERE – WEAK INTERACTIVE MASSIVE PARTICLES IN SPACE – THEY TAKE PICTURES OF THEM – BUT, THEY'VE AS YET NOT EXPLAINED WHY THEY ARE THERE. DITTO ALL OF THE OTHER OBSERVATIONS OF THE AETHERIC BANDS – SCIENCE WILL NOT HAZARD EVEN A GUESS AS TO WHY THESE THINGS OCCUR. LIKE MAYBE THERE IS MORE THAN ONE AETHER? JUST MAYBE THERE ARE AN INFINITE NUMBER OF AETHERIC REALMS?

THE RULE – LIKE ATTRACTS LIKE – IS SIMPLE OBSERVATION.

FINALLY: THE PARALLEL ELECTRIC AND MAGNETIC COMPONENTS IN THE GAPS. I'VE NO EXPERIMENTAL PROOF OTHER THAN TO SAY THAT IN ALL POLARIZED FIELDS THE COMPONENTS ARE AT RIGHT ANGLES TO EACH OTHER. THEREFORE, IN NON-POLARIZED FIELDS THE PHASE ANGLE HAS TO BE DIFFERENT. THERE ARE TWO PHYSICISTS WHO HAVE PROOF OF THIS ONE IS LOREN ZANIER WHO HAS PASSED AWAY AND THE OTHER IS A CAMBRIDGE PhD NAMED STALLWORTHY, WHO TOOK HIS LIFE BECAUSE THE ESTABLISHMENT WOULD NOT LISTEN TO HIM ON 2-D ENERGY. SO, SOME EXPERIMENTS NEED TO BE DESIGNED THAT SHOW THE PARALLEL COMPONENTS IN THE GAP.

NOW ABOUT THE AUTOMATIC WAY THAT THINGS HAPPEN IN THE GAP – MENTIONED EARLIER:

CAPACITANCE IS A STANDARD IN ELECTRONICS – IF YOU HAVE TWO PARALLEL PLATES AND YOU CHARGE ONE WITH NEGATIVE ENERGY – THE OTHER WILL AUTOMATICALLY BECOME CHARGED WITH POSITIVE ENERGY = MIRRORING. THE NEGATIVE ENERGY INDUCES THE POSITIVE ENERGY AND VICE VERSA. THEREFORE, CAPACITANCE IS ALSO CALLED INDUCTANCE. IN BETWEEN THE TWO PLATES IS A NO MAN’S LAND OF NON-POLAR ENERGY – AND THERE ARE SOME INTERESTING AFFECTS THEREIN:

THE LARGE SWISS FERTILIZER FIRM, CIBA, WAS EXPERIMENTING WITH GENETICALLY MODIFIED WHEAT SEEDS. THEY GERMINATED SOME OF THE GM SEEDS IN A LIGHT CAPACITANCE FIELD – TWO ALUMINUM PLATES HOOKED TO A NINE VOLT BATTERY. THE WHEAT SPROUTED AND THEY REMOVED THE PLATES. THAT WHEAT THEN GREW AS DIPLOID WHEAT, WHICH IS THE ABORIGINAL FORM OF WHEAT ON THIS PLANET. IT GROWS ALONG THE GROUND (because it was real windy on the planet in those days), AFTER ABOUT 8 WEEKS IT STICKS UP A SHORT SHOOT AND HEADS OUT READY FOR HARVEST (short growing seasons then, too. Modern wheat takes four to five months to be ready for harvest). THIS NEWLY CREATED DIPLOID WHEAT (created from genetically modified seeds!!!) HAS THE GENETIC STRUCTURE OF THE ANCIENT DIPLOID SPECIES!!! CIBA HAS PATENTED THIS PROCESS. SO, THE GAP ENERGY SIMPLY TOOK THE WHEAT BACK TO GOD’S ORIGINAL IDEA FOR WHEAT – AUTOMATICALLY. THAT DIPLOID WHEAT IS MUCH BETTER FOR US TO EAT THAN THE MODERN STUFF – GOD DESIGNED IT THAT WAY – AND APPARENTLY HAS NOT FORGOTTEN.

TRANSISTORS ARE SOLID STATE CAPACITORS THAT WORK MUCH FASTER THAN THE OLD VACUUM TUBES. BUT, THEY ESSENTIALLY DO THE SAME TYPES OF THINGS. FOR EXAMPLE: AS A COMPUTER’S PULSED DIRECT CURRENT PASSES THROUGH A TRANSISTOR THAT TRANSISTOR AUTOMATICALLY PERFORMS THE CALCULUS FUNCTION OF INTEGRATION, WHICH SOLVES FOR THE AREA & POWER UNDER THE CURVE – AUTOMATICALLY. SO, WE OWE THE DIGITAL AGE TO GOD – IT WORKS ACCORDING TO HER RULE – I AM THAT I AM. SHALL WE SAY THAT GOD INVENTED CALCULUS?

“Taking a closer look is Tim Ventura and his fellow researchers at American Antigravity, an organization based in Kirkland, Washington. Ventura and his crew use electrostatic asymmetrical capacitors to create a field that levitates objects, such as their small kite-like “lifters”. These lifters are very light, weighing only a few ounces, and have balsawood struts that support the capacitors. When two capacitors of different size and load receive their share of a 30,000-volt charge, the lifter lifts – with no motors, no wings and no apparent source of lift. How, no one really knows, in my judgment. The



phenomenon is replete with controversy and mystery. But as one who has seen a lifter fly, let me tell you what one looks like and what I saw when Tim Ventura's took off.

Tim has been building lifters since he was a kid and has perfected a 4x4x4-foot triangular lifter which has flown so many missions in his garage that the sliver aluminum foil has turned white. ...”

NOT TOO SURPRISING, THEY USE CAPACITORS. SO, WHY DOES THE LIFTER LIFT – ANSWER: BECAUSE THE FIELD BETWEEN THE CAPACITORS IS IN HARMONY WITH THE AETHER.

THERE'S MORE – THE LIFTER WANTS TO CONTINUE LIFTING:

“... The three corners of the lifter are tethered to the work table so that the electrical leads from the power source are not broken off in flight.

... At full throttle, the lifter is straining at the tethers, bending the balsawood frame near the point of fracture.”

SO, SERIOUS ANTI-GRAVITY, NOT ONLY DOES THE THING LEVITATE, BUT IT WANTS TO LEAVE THE PLANET IT SEEMS. OK – WHY?

“... At full power of 30,000 volts, the lifter is roaring and a noticeable downward breeze is observed. Many physicists call it ‘ion wind’ and say that this is what causes the lifters to fly. ...

To analyse the air currents, Tim blew baby powder at the top of the lifter. The majority of the particulate cloud was drawn into the middle area of the lifter and then sucked downward. A kind of vortex was created at times ... I could see a cloud forming into an organized column beneath the lifter and then spreading out 360 degrees once it hit the work table surface.”

SO A VORTEX – MAYBE A NIELSON-OLSEN VORTEX WHICH SURROUNDS A HIGGS SUPER CONDUCTING VACUUM? IF YOU READ THE ARTICLE IN NEXUS, BRUCE SMITH ELABORATES ON NUMEROUS THEORIES BY GREY BEARDED PHYSICISTS LIKE HAL PUTTOFF, DR. JOHN J. RUSEK, AND JEAN-LOUIS NAUDIN, WHO HAS A WEB SITE SHOWING LOTS OF WORK ON THE LIFTER PHENOMENA <http://jnaudin.free.fr/lifters/main.htm>

NOT ONE OF THESE ESTEEMED IDIOTS REFERS TO THE AETHER OR THE ANU – NOT ONE. TWO IRREFUTABLE PHYSICAL FACTS OF NATURE – WHICH IS WHAT THE SCIENCE OF PHYSICS IS SUPPOSED TO STUDY – AND NOBODY PAYS ATTENTION!!! I GUESS IT IS JUST TOO SIMPLE.

BACK TO WHY THE LIFTER WANTS TO KEEP LIFTING = THE VORTEX

I LOVE THIS ONE:

“Torsion fields might play a role here, according to many, and the literature on antigravity is filled with the term “torsional effects”. But, what exactly is a torsion field?

...

Mike Wright, resident physics expert at BeyondTheOrdinary.Net webstream radio told me this:

‘When forces create curvature (such as rotation) in more than two planes, a torsion field results. Not only does the object go around, but it goes around and ‘down’ or ‘up’, and the up/down movement is an additional acceleration in that dimension. EM and gravitational field differ by having a magnitude of force and only one direction of movement.’ ”

SO CURVATURE OR ROTATION IN MORE THAN TWO PLANES – THAT’S WHAT HE SAID. OK – PLEASE TAKE A LOOK AT THE ANU – IT HAS ROTATION IN TWO DIRECTIONS. THUS, A TORSION FIELD AND AN ANU ARE THE SAME THING...??!!! OF COURSE, THEY ARE.

VIKTOR SCHAUBERGER DID THIS WITH WATER AND AIR – BY CAUSING A DOUBLE SPIN – LIKE HE FOUND IN NATURE BY WATCHING ROCKS FLOAT DOWN TURBULENT STREAMS. SCHAUBERGER WAS ABLE TO FLOAT LOGS THAT ARE HEAVIER THAN WATER. HE ALSO MADE WATER FLOW IN PIPES WITHOUT FRICTION – WELL THEY CALLED IT NEGATIVE FRICTION BECAUSE THE WATER ACTUALLY SPEEDED UP. THAT TECHNOLOGY WAS USED TO BUILD A FLYING SAUCER FOR HITLER – THAT PROJECT WAS CRUSHED BY THE END OF THE WAR. THAT TECHNOLOGY ALSO CLEANS WATER – THERE IS A NEW PATENT BY CHRISTOPHER SEEBACH WHEREBY HE USES SCHAUBERGER’S TECHNOLOGY TO CLEAN WATER. AND THERE IS A KANSAS FARMER THAT HAS AN AIR VORTEX DEVICE THAT CRUSHES ROCK WITH ONLY AIR!!! SO, THERE IS MORE TO A VORTEX THAN JUST SPIN – LIKE MAYBE A GAP IN THE MIDDLE.

ALSO, THE CROP CIRCLES ARE NOW ATTRIBUTED TO TORSION FIELDS, WHICH ARE ANUs.

HOW ABOUT TORNADOES? NOW THERE’S SOME SERIOUS TORSION – FROM BRUCE SMITH & NEXUS:

“... Nevertheless, tornadoes have anomalous effects that are legendary: blades of grass stuck into mirrors, a piece of straw embedded flawlessly into a tree trunk. How? It seems as if the laws of mass, gravity and inertia are melted as winds swirl at speeds up to 300 mph in an organized vortex pattern. Is this a clue to melting the pull of gravity?”

YOU GOT IT BRUCE – THAT IS CORRECT – AS STATED IN THE BEGINNING OF THIS ESSAY – THERE IS NO TIME, FREQUENCY, NUMBERS NOR LANGUAGE WHEN THESE FUNDAMENTAL FORCES WERE FORMED.

AS THE TORNADO REACHES A CERTAIN SPEED IT CAUSES EDDIES TO FORM – SO YOU HAVE SPIN IN TWO DIRECTIONS = AN ANU. AND THE ANU IS TWO DIMENSIONAL AND CAN OCCUPY NEARLY THE SAME SPACE AS ANY OTHER ANU. SO, BOTH THE TREE AND THE STRAW ARE IN 2-D FOR A MOMENT – THUS, THE STRAW IS SIMPLY COMBINED WITH THE TREE AT ITS MOST FUNDAMENTAL LEVEL. DITTO THE GRASS IN THE MIRROR.

SO NOW WE GO BACK TO:

“Podkletnov, the Russian researcher working in Finland, ... claims that the “if the superconductors were rotated considerably faster than 5000 rpm ... perhaps five to 10 times as fast, the disk experiences so much weight loss that it actually takes off”. Or 25,000-50,000 revolutions per minute within some kind of torsion field creates levitation.”

ACTUALLY, THERE WAS A BRITISH ELECTRICIAN WHO SIMPLY WELDED MAGNETS TO A DISK – GOT THE DISK TO SPIN AT ABOUT 20,000 rpm AND IT WOULD TAKE OFF INTO SPACE NEVER TO BE SEEN AGAIN.

ALL OF THESE FACTUAL OBSERVATIONS ADD UP – LIKE  $1 + 1 = 2$  BUT, DON'T TELL SCIENCE – THEY ARE HAPPY WITH THEIR COMPLICATIONS.

SO, ANTI-GRAVITY WORKS IN TWO WAYS:

- 1) VIA COMING IN HARMONY WITH THE AETHER – THE GAPS IN THE AETHER MORE PRECISELY – HERE THE LEVITATING OBJECT ACHIEVES A STATION IN SPACE AND JUST STAYS THERE – SUPER CONDUCTORS DO THIS. CAUSE = THE RULE, “LIKE ATTRACTS LIKE”.
- 2) VIA SPIN WHICH ULTIMATELY CREATES AN ANU – THIS DUE TO THE RULE ALSO I.E. ONE SPIN BEGETS ANOTHER. IT IS THAT THE SPIN ALLOWS THE OBJECT TO MOVE FROM ONE PLANE IN THE AETHER TO ANOTHER – QUITE NATURALLY AND AUTOMATICALLY = LIFT OFF AND GONE.

I B LEVITATING. BUT DON'T TELL A SCIENTIST, IT WILL CONFUSE HIM.

AND, OF COURSE, SAI BABA SUMS IT UP – THE ATMA = THE ANU.

A deep enquiry into the principles of science and spirituality will reveal that the atom is the basis of everything in this world. Even the food we eat, the water we drink, the air we breathe, are all constituted by atoms. But there is something more subtle and fundamental than even the atom. Everything has originated from the Fundamental Principle. Instead of trying to know the Fundamental Principle, man is getting carried away by trivialities. Subtler than the atom, vaster than the cosmos, Divinity is present everywhere as the eternal witness. Try to experience the principle of the Atma which transcends everything. In order to experience the Atma, you should pursue spiritual education along with secular education.

BLESSINGS,