

## LIFE FORCE ENERGY

WHICH IS, OF COURSE, THE ANU / PHOTONS, PIECES OF LIGHT  
AND, ALSO, GAP ENERGY, NON-POLAR ENERGY / GOD'S ENERGY / SPACE,  
AS WE WELL KNOW, FROM THE CIBA GEIGY PATENTED PROCESS  
WHEREBY CAPACITANCE NON-POLAR 2-D ENERGY FIELDS (PREGNANT SPACE) ARE USED  
TO RESTRUCTURE DNA BACK TO THE ABORIGINAL FORMS

THAT SAYS IT. BUT, AS PER USUAL WE'LL PUT SOME MORE MEAT (LIFE FORCE) ON THE BONE FOR YA.

SO, WHAT IS THE IRREFUTALBE PROOF?

FIRST OF ALL WHAT IS LIFE FORCE ENERGY? ALSO KNOWN AS CHI TO THE CHINESE, PRANA TO THE HINDU, THE MEDICINE WHEEL OF THE AMERICAN INDIANS, AND REIKI IS A WORD MEANING LIFE FORCE ENERGY.

ANSWER: IT IS THE ENERGY THAT MAKES ALL THINGS MOVE AND LIVE

VS

THE ENERGY *FORM* THAT IS THE ORIGIN OF LIFE, WHICH IS THE ANU AS REPORTED IN THE "ORIGIN OF LIFE" ESSAY. HERE WE ARE LOOKING FOR THE ENERGY THAT ANIMATES THE ANU, MAKING IT PULSATE (EXPAND AND CONTRACT) AND SPIN – STATING THAT MAKES THIS JOB EASY AND OBVIOUS. BUT, WE'LL ADD SOME INTERESTING INFORMATION FOR HUMANS.

SO, SINCE ALL "MATTER" IS TOTALLY IMMERSSED IN SPACE, THEN THE SOURCE OF LIFE FORCE ENERGY FOR "MATTER" HAS TO BE SPACE. FRANKLY, THIS IS NOT DIFFICULT, ATOMS VIBRATE CONSTANTLY AND ALL VIBRATIONAL ENERGY DISSIPATES. SO, SINCE SPACE IS INFINITE, THEN SPACE HAS TO BE THE SOURCE OF THE INFINITE ENERGY VIA WHICH ATOMS CONTINUE TO VIBRATE. PLEASE, THERE ISN'T ANYTHING ELSE THERE. FOR SURE, IT IS THE ONLY INFINITE ENTITY THERE – SO, INFINITY BEGETS INFINITY. THEREFORE, OUR PREGNANT SPACE IS LIFE FORCE ENERGY.

THE PREGNANCY IS CAUSED BY HER RULE – "I AM THAT I AM" / "LIKE ATTRACTS LIKE", WHICH CAUSES THE ATOMS AND ANUs TO SPIN – AND A PULSATION IS ADDED BY QUANTUMS OF ENERGY COMING FROM THE MOTHER/SPACE VIA THE DNA UMBILICE CORD.

AS SEPP SAYS: I would think that the energy that makes all things move and live is the same energy that creates all things. Life energy is something from outside (beyond) the physical universe, which yet animates and is responsible for the existence of everything inside the physical. The ANU is the first

manifestation of that energy, the first transformation from the non physical to the physical, the step from 2D to 3D.

HOW DID YOU LIKE THAT ESSAY? SHORT AND SWEET AND THE PROOF IS, AS STATED, IRREFUTABLE. INFINITY BEGETS INFINITY I.E. BRINGS THIS CHILD INTO THE WORLD BY THE PROCESS OF REPRODUCTION.

OH, SHEESH, I KNOW THAT IS NOT SUFFICIENT TO OUR COMPLICATED MINDS AND LIVES. SO, WE'LL CARRY ON. THIS IS FUNNY – WHEN ONE READS “LIFE FORCE ENERGY”, YAHOO!!, WE'RE GOING TO SEE WHAT ANIMATES DNA MAKING US LIVE AND INSTEAD WE ARE TALKING ABOUT WHAT ANIMATES ALL ATOMS AND ROCKS – SNICKER – DON'T WORRY WE'LL GET TO THE EXACT ENERGY THAT ANIMATES YOUR LIFE FORCE ENERGY.

I WAS JUST READING THE FAMOUS OLD BOOK (1979) “THE DANCING WU LI MASTERS” BY ZUKAV. IF YOU EXPANDED AN ATOM UP TO THE SIZE OF A 14 STORY BUILDING THE NUCLEUS WOULD BE THE SIZE OF A GRAIN OF SALT AND THE ELECTRONS BUT A BIT OF DUST. SO, I SAY, IF YOU EXPAND THAT OUT TO WHERE THE NUCLEUS IS THE SIZE OF OUR SUN, THEN THE ELECTRONS WILL NOT BE IN THIS SOLAR SYSTEM. SO, PROPORTIONALLY THERE IS MORE SPACE IN AN ATOM THAN IN THIS SOLAR SYSTEM, BY MILLIONS OF TIMES. OUR SUPPOSED “MATTER” IS THE WILL-O-THE-WISP – **ITS REALITY LIES IN THE IMAGES FORMED BY CONSCIOUSNESS**, NOT BY THE LITTLE SUB-ATOMIC BITS, INTO WHICH WE HAVE INVESTED SO MUCH TIME, EFFORT AND MONEY.

SO, THE VAST MAJORITY OF EVERYTHING IS SPACE, THE FIRST FORM OF GOD / THE HOLY GHOST / THE GREAT SPIRIT / BRAHMA / ALL-THAT-IS . NOTICE THE NAME THAT IS MISSING – THE VOID. ACTUALLY OUR LOCAL AMBIENT SPACE HAS A STRUCTURE CAUSED BY THE AETHERS, WHICH CARVES SPACE INTO CELLS OR QUANTUM PACKETS OF POTENTIAL ENERGY – POTENTIAL TO BE ANYTHING. SO, THIS SPACE HERE, WHERE WE ARE AT IS NOT A VOID LIKE WE ARE LED TO BELIEVE. AND, THIS PREGNANT SPACE ACTUALLY ANIMATES LIFE AS OPPOSED TO BEING LIFELESS AND INERT.

WHOOPS

HARD TO BELIEVE – AIN'T IT? ESPECIALLY, WHEN ONE CONSIDERS THE NEXT LOGICAL CONCLUSION – THAT EVERYTHING LIVES. THUS, WE SHOULD HONOR EVERY PIECE OF SPACE FOR GIVING US LIFE – ALTHOUGH THAT IS A BIT MUCH.

MORE PROOF – HOWEVER, THEY USE DIFFERENT WORDS.

## Prana

From Wikipedia, the free encyclopedia

**Prana** is the [Sanskrit](#) for "vital life" (from the root *prā* "to fill", [cognate](#) to Latin *plenus* "full"). It is one of the five organs of vitality or sensation, [viz. prana](#) "breath", [vac](#) "speech", [chakshus](#) "sight", [shrotra](#) "hearing", and [manas](#) "thought" (nose, mouth, eyes, ears and mind; [ChUp](#). 2.7.1).

In [Vedantic](#) philosophy, prana is the notion of a vital, [life](#)-sustaining force of living beings and [vital energy](#), comparable to the Chinese notion of [Qi](#). Prana is a central concept in [Ayurveda](#) and [Yoga](#) where it is believed to flow through a network of fine subtle channels called [nadis](#). Its most subtle material form is the breath, but it is also to be found in the blood, and its most concentrated form is semen in men and vaginal fluid in women.<sup>[1]</sup> The *Pranamaya-kosha* is one of the five [Koshas](#) or "sheaths" of the [Atman](#).

Prana was first expounded in the [Upanishads](#), where it is part of the worldly, physical realm, sustaining the body and the mother of thought and thus also of the [mind](#). Prana suffuses all living forms but is not itself the [Atman](#) or individual soul. In the Ayurveda, the [Sun](#) and [sunshine](#) are held to be a source of Prana.

## **Nadis**

Further information: [Nadi \(yoga\)](#)

In [Yoga](#), the three main channels of prana are the Ida, the Pingala and the Sushumna. Ida relates to the right side of the brain, and the left side of the body, terminating at the left nostril and pingala to the left side of the brain and the right side of the body, terminating at the right nostril. In some practices, alternate nostril breathing balances the prana that flows within the body. In most ancient texts, the total number of nadis in the human body is stated to be 72,000. When prana enters a period of uplifted, intensified activity, the [Yogic](#) tradition refers to it as [Pranotthana](#).<sup>[2]</sup>

## **The Medicine Wheel**

The Medicine Wheel is a powerful metaphor for the totality of life. All aspects of creation and consciousness, inclusive of the mineral, plant, animal, human and spirit realms, are contained within the center and eight directions of the medicine wheel. They overlap and interweave to form the whole. It is in the center of the medicine wheel that we find the void, black hole, sacred zero, the chaos at the source of creation, containing all possibilities. Each of the elements - air, fire, water, and earth - is guided and molded by the sacred life force energy contained within the void.

## **CHI**

### **Universal Life Force Energy**

Everything in creation is made up of electromagnetic energy vibrating at different frequencies that correspond to sound, light and color. The existence of electromagnetic fields around every object in the world, known as an **Aura**, is a scientifically proven fact. The Chinese refer to this energy as 'Chi' (pronounced Chee), the vital life force energy of the Universe, present within every living thing. Western medical science is now beginning to take a serious look at ancient Far Eastern traditions that focus on Chi - the life force energy which flows through the pathways ([meridians and chakras](#)) of all living forms - in order to maintain health and wellness, mentally, physically and emotionally.



**Chi is a Chinese word meaning aliveness, life force energy or life breath  
- also known as Ki, Qi or Prana.**

**The Definition of Chi:**

"Theories of traditional Chinese medicine assert that the body has natural patterns of qi associated with it that circulate in channels called meridians in English. Symptoms of various illnesses are often seen as the product of disrupted or unbalanced qi movement through such channels (including blockages), deficiencies or imbalances of qi, in the various Zang Fu organs. Traditional Chinese Medicine seeks to relieve these imbalances by adjusting the flow of qi in the body using a variety of therapeutic techniques."  
- Wikipedia.

OK, ENOUGH DISCUSSION – LET’S STATE IT IN PLAIN WORDS:

NOTICE THAT THE PRANA AND CHI FLOW IN CHANNELS, MERIDIANS AND NADIS. SO, WHAT ARE THOSE CHANNELS EXACTLY? THE ANSWER IS OBVIOUS: IT IS THE AETHER(s) – MORE PRECISELY, THE GAPS IN THE AETHERS. THOSE GAPS ARE THE OPERATIVE BITS OF A SUPER CONDUCTOR. ALL OF YOUR CONNECTIVE TISSUE IS SUPER CONDUCTING I.E. LIGAMENTS, TENDONS, CARTILAGE AND COLLAGEN – THIS IS WHY YOUR HANDS ARE HEALING INSTRUMENTS – USE THEM, THEY WILL WORK, AUTOMATICALLY.

NEXT QUESTION – WHAT FLOWS IN THESE CHANNELS? ANSWER: LIGHT IN THE FORM OF PHOTONS (EXPRESSLY, NOT VIBRATIONS). PHOTONS ARE ANUs. PHOTONS ARE WHAT FLOW IN SUPER CONDUCTORS (NOT ELECTRICITY). ALL DNA IS SUPER CONDUCTING. THUS, ONE WOULD SAY THAT THEN, PHOTONS ARE THE LIFE FORCE ENERGY OF LIVING THINGS. WHICH IS KIND OF TRUE – THE TRUTH IS THAT THESE PHOTONS ARE THE TOOL VIA WHICH DNA IS ANIMATED. AS SEPP SAYS ABOVE

NEXT QUESTION – WHERE DO PHOTONS COME FROM? ANUs HAVE A TIME COMPONENT, BECAUSE THEY FORMED IN THE AETHER, WHEN GOD / SPACE BECAME AWARE OF THE PASSING OF TIME. THE FORM OF THE ANU CAME ABOUT BECAUSE OF THE RULE – “I AM THAT I AM” WHICH IS NOW, “LIKE ATTRACTS LIKE”, WHICH IS WELL EXPLAINED THROUGHOUT THESE WRITINGS.

NEXT, VIA THE ANU GOD LEARNED THAT SHE COULD STORE IDEAS IN THEM – SEE THE “MEMORIES ARE MADE OF THIS” ESSAY, WHICH PROVES THAT MEMORIES/IDEAS ARE ANUs. SO, WHO HAD THE FIRST MEMORY/IDEA? DO YOU RECKON THAT HER IDEAS BECAME MORE COMPLEX I.E. EVOLVED? WHAT DO YOU THINK OF THE RECTUM AS A HOLE?

WHERE DOES EVOLUTION COME FROM? IT IS A KIND OF DARWIN’S NATURAL SELECTION, BUT IN THE FORM OF A PROGRESSION OF IDEAS, NOT PHYSICAL TRANSFORMATIONS. THIS IS HILARIOUS FRANKLY, THERE IS A LAKE ON THIS PLANET THAT HAS 600 SPECIES OF A CERTAIN FISH – ALL IN THE SAME LAKE? FOR WHAT PURPOSE? HAVE THE FOOD SOURCES OR PREDATORS CHANGED – NO. SO, WHY? ANSWER: CHANGE IS FUN. AND CHANGES COME IN QUANTUM LEAPS.

AFTER A FEW BILLION YEARS, DID SHE GET TIRED OF HER IDEAS? WHY IS IT THAT YOU CAN THINK?  
ANSWER: ENTERTAINMENT = RELIEF FROM BOREDOM = FUN AND JOY. AND THERE YOU ARE = GOD'S  
BEST IDEA – "LET SOMEBODY ELSE DO SOME THINKING AND PLAYING".

THEREFORE, LIFE FORCE ENERGY MANIFEST CONSTANTLY EMANATING FROM SPACE VIA A  
PROGRESSION OF IDEAS, PROJECTED WITHIN THE AETHERS, ANIMATED BY ANUs THAT SPIN AND  
PULSATE (SAID PULSES COME FROM SMALLER SUBTLE QUANTUMS OF THE IDEAS WITHIN SPACE).  
PLEASE SEE THE "GRAIN GROWTH ..." ESSAY FOR ANOTHER EXPLANATION OF THIS.

THE PURPOSE OF LIFE FORCE ENERGY IS FOR FUN AND JOY, MORE SO THAN YOU CAN POSSIBLY  
IMAGINE AT THIS MOMENT. GOD HAS AN AMAZING PLAN FOR US. PLEASE SEE THE "AMAZING  
REVELATIONS" ESSAY FOR THE FULL EXTENT.

END OF THE LIFE FORCE ENERGY DISCUSSION

THANK YOU KINDLY FOR YOUR ATTENTION – NOW RE-READ IT – YOU'LL FIND STUFF THAT YOU MISSED.

MORE PROOF

I WAS GOING TO COMMENT, BUT IT IS TOO OBVIOUS.

## **DNA Molecules Can 'Teleport,' Nobel Winner Says** **By John E Dunn, Techworld.com**

A Nobel Prize winning biologist has ignited controversy after publishing details of an experiment in which a fragment of DNA appeared to 'teleport' or imprint itself between test tubes.

According to a team headed by Luc Montagnier, previously known for his work on HIV and AIDS, two test tubes, one of which contained a tiny piece of bacterial DNA, the other pure water, were surrounded by a weak electromagnetic field of 7Hz.

Eighteen hours later, after DNA amplification using a polymerase chain reaction, as if by magic the DNA was detectable in the test tube containing pure water.

Oddly, the original DNA sample had to be diluted many times over for the experiment to work, which might explain why the phenomenon has not been detected before, assuming that this is what has happened.

The phenomenon might be very loosely described as 'teleportation' except that the bases project or imprint themselves across space rather than simply moving from one place to another.

To be on the safe side, Montagnier then compared the results with controls in which the time limit was lowered, no electromagnetic field was present or was present but at lower frequencies,

and in which both tubes contained pure water. On every one of these, he drew a blank.

The quantum effect - the imprinting of the DNA on the water - is not in itself the most contentious element of the experiment, so much as the relatively long timescales over which it appears to manifest itself. Quantum phenomena are assumed to show their faces in imperceptible fractions of a second and not seconds minutes and hours, and usually at very low temperatures approaching absolute zero.

Revealing a process through which biology might display the underlying 'quantumness' of nature at room temperature would be startling.

Montagnier's experiment will have to be repeated by others to have any hope of being taken seriously. So far, some scientists have been publically incredulous.

"It is hard to understand how the information can be stored within water over a timescale longer than picoseconds," said the Ruhr University in Bochum's Klaus Gerwert, quoted by New Scientist magazine, which broke the story (requires registration).

What does all of this mean? It could be that the propagation of life is able to make use of the quantum nature of reality to project itself in subtle ways, as has been hinted at in previous experiments. Alternatively, it could be that life itself is a complex projection of these quantum phenomena and utterly depends on them in ways not yet understood because they are incredibly hard to detect.

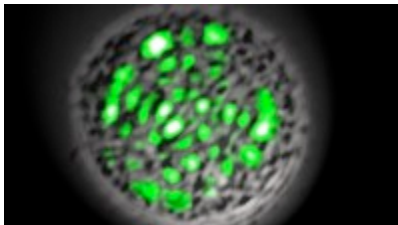
Speculatively, (and Montagnier doesn't directly suggest anything so unsubstantiated), it could also be the little-understood quantum properties of the water molecule and not just its more obvious chemical bonding properties that gives it such a central role in the bio-engineering of life-forms. Water might be a good medium in which DNA can copy itself using processes that hint at quantum entanglement and 'teleportation' (our term).

Montagnier's paper goes on to discuss the phenomenon he claims to have uncovered using 'quantum field theory' within the context of his personal interest, disease propagation.

---

[http://arxiv.org/PS\\_cache/arxiv/pdf/1012/1012.5166v1.pdf](http://arxiv.org/PS_cache/arxiv/pdf/1012/1012.5166v1.pdf)

## DNA Waves & Water



### Scientists create 'living laser'

While laser beam-shooting plants or animals might seem like something straight out of *Star Trek*, two researchers from the Wellman Center for Photomedicine at Massachusetts General Hospital recently wondered whether such organisms could theoretically exist. In order to satisfy their curiosity, Dr. Malte Gather and Dr. Seok Hyun Yun successfully created a laser that uses a living cell as its light source. The device, which utilizes a protein found in jellyfish, could have applications in the fields of biomedicine and optical computing.

## AND THEY SAY

Traditionally, lasers have used synthetic materials such as crystals, dyes and purified gases to amplify photon pulses as they bounce back and forth between two mirrors. Gether and Yun instead used a single, living cell as the optical gain media.

AND DNA IS USED TO MAKE FLAT PLATELETS IN THE CONTRUCTION OF NANO MACHINES. WHY DOES DNA MAKE THINGS GO FLAT / 2-D? DUH.

BLESSINGS